



Connecticut Section of the Green Mountain Club

VOLUME XXXV ISSUE II EDITOR: CAROL A. LANGLEY July 2014 – Sept. 2014

IMPORTANT MESSAGES

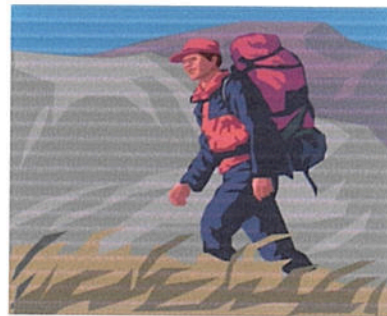
I will no longer be posting activities to the Yahoo Site. Messages are not being delivered to the members or they are being dumped into the SPAM ACCOUNT. It will be your responsibility to make a copy of the activities and post near your calendar. For those members who are high tech you probably already post to your phone or tablet.

Hike leaders will be responsible to post changes or cancellations of their activities to the Wiki site or contact Mandy at: trekeragb@sbcglobal

I need help producing your quarterly Newsletter. It is a lot of work and the load would be much lighter if someone would come forward and offer to assist me. I have been producing Trail Talk for an cumulative of 20 plus years. The Newsletter is the life line of the CT. Section.

Let me hear from you soon if you would like to see your newsletter continue.

Thank you,
Carol A. Langley



Club Information
http://www.conngmc.com
Officers & Executive Committee

WELCOME NEW MEMBERS

Carol A. Langley - President
cosmical14@yahoo.com

Dick Hart, 1st Vice President, Trails & Shelters
(203) 484-9925, ihike@sbcglobal.net

Mandy Brink, 2nd Vice President of Activities
trekeragb@sbcglobal.net

Laurene Sorensen, Director
(401) 965-6724, laurenesorensen@gmail.com

Andrew J. Hood, Alt Director
(860)-646-2753, andrew.hood@snet.net

Kevin T. Burke, Secretary
(203)-729-1603, burke-kevin@sbcglobal.net

Marianne Valley, Treasurer
m_valley@att.net

Please direct all inquiries regarding the Club to the President.

The Trail Talk is published four times a year, Winter, Spring, Summer and Fall. Activity schedules are included in each issue. Reports of activities and articles must be sent to the editor no later than the tenth day of the month of the publication. Send articles to:

Carol A. Langley
67 Pondview Drive
Southington, CT 06489
cosmical14@yahoo.com

Membership

When filling out the form to join or renew, circle the **Connecticut Section** on the application to receive, at no extra charge, the Connecticut Section's newsletter and activity schedule.

Dues:

Individual Adult	\$45.00
Family	\$60.00
Senior (70 or older) or Limited Income	\$25.00
Sponsor (Individual/Family)	\$75.00

Send annual dues to:
The Green Mountain Club
4711 Waterbury-Stowe Road
Waterbury Center, VT 05677-9904
(802) 244-7037, http://www.greenmountainclub.org

Lindsay Bensenhaver
Richard A. Burke
Gary W. Griffin
Peter Passalacqua

SEE YOU ON THE TRAIL!!

GOOGLE CALENDAR

If you would like to be added to this site please subscribe to site listed below.

Ct-gmc-activity-reminders+subscribe@googlegroups.com

Allen Freeman will be posting our activities to this site. Please contact him with any questions:

alien@alienf.com

THANK YOU

Richard & Leslie Chandler
for your generous donation to the CT. Section

HIKE LEADERS

All reports should be sent in a Word Document in Times Roman 11. Reports sent from I-phones or I Pads will be returned.

Thank you,
Carol A. Langley

**John Rand Cabin
February 21-23, 2014**

Scott, Mandy, , Mike, Mark and I drove up from the Hartford area on Friday and after stopping for lunch in Fairlee, VT, got to the trailhead on Rt. 118. Thankfully, the forecasted heavy rains never did materialize. We met Jim waiting for us at the trailhead.

The snow hadn't been broken out on the trail. Between the group of us and our toboggans, it was in good condition for those who followed.

The detailed set of instructions the Leader so carefully prepared had the wrong combination for the lock to the cabin. But we weren't about to let a little glitch stand in the way of our plans. We got into the cabin via an unlocked window. However, we still couldn't open the inner door so we simply unscrewed the door hinges to access the cabin. Happily, Mike found the combo in some old notes left behind by prior campers and we were back on plan.

The group of us snowshoed up to Mts. Jim (elev 4,180) and Blue (elev 4,530) via Beaver Brook and Asquam Ridge Trail. Because Mark and Scott hadn't been up to the area before, they continued up to Mt. Moosilauke (elev 4,802) on the Beaver Brook and Benton Trails. The day was very nice and the snow was a beautiful, pristine powder.

Carol and Kevin drove up on Saturday and met us back at the cabin. They ran into a Dartmouth College trail maintenance guy at the cabin who had hiked in to restock some consumable supplies and a replacement waste ash can.

Kevin said he preferred to sleep in his tent out on the porch. He may have had the most temperate sleeping conditions as the cabin got very hot inside for the rest of us.

As always there was plenty of good food, talk and games.

Sunday morning, we drove to the Wilderness Bookstore in Lincoln. Rt. 112 had so many frost heaves it was like negotiating the moguls on an Olympic Giant Slalom course.

Jim had to leave to get home for a concert. The rest of us 'shoed up to Bridal Veil Waterfall via Coppermine Brook Trail. It was completely covered in ice. We could even walk behind the frozen falls.

Carol and Kevin needed to go straight home but the rest of us stopped for dinner in Woodsville, NH. The food was tasty and Scott had his heaps of gravy - life is good.

Scott Black, Mandy Brink, Kevin Burke, Carol Langley, Jim Moore, Mike Shaw, Mark Stone, and Dick Hart, Leader

**White Memorial
February. 2, 2014**

Most trail heads were not assessable from all the snow and ice. Big Cathedral Trail off Rte. 61 had the most parking so we started there

Our group of seven hiked along old woods roads that were lined with huge majestic pines creating a tunnel effect. Making a loop of the Beaver Pond Trail and Little Cathedral we returned to our first intersection and continued to Rte. 63.

As we crossed over to this section there was evidence of recent logging. Take a left onto the Plunge Pond

Trail we found tracks of blood from an animal who apparently had been injured. The groups' speculation was that the tracks were of a deer that had been attack by a coyote. This trail is quite lovely as it climbs alongside the pond with its' path of Mountain Laurel.

High Noon, time to scout out a place for lunch. We spotted a stonewall, which upon crossing Karen Wells saw a lovely grassy clearing on an inlet of the pond. During lunch Dave heard a

Kingfish in a tree above us. Karen spotted Trailing Arbutus just peaking out of the ground.

The clouds rolled in and 15 minutes before we reached the cars the rain fell. The group stopped at Dunkin Donuts for some warmth and good conversation.

L. Carol A, Langley

Hikers; Don Hagstrom, George Jackson, Bob & Mel Michaud, Dave & Karen Wells

Mattabesett Trail April 17, 2014

The terrain of this 6.5 mile section of the Mattabesett Trail is rocky. Its steep ups and downs follow a trap rock ridge over Fowler and Pistapaug Mountains. We began on Rt. 68 (Reed Gap) and followed the trail south. Within just a short way we came upon a small shelter. Two actually, set close together beside a fire ring. A stash of wood was at the ready for one seeking warmth during a night's stop. We gradually made our way up the trail towards Fowler Mountain. The first showing of new growth from the forest floor were ramps, a wild onion. Mark was familiar with how they can be cooked. Alas, no one had brought a trowel with which to dig them for a tasty meal later. We kept watch for the abandoned Wadsworth Farm Road as we were interested in following it to where a marker once noted that George Washington used this route. Our opportunity, however, slipped by us as we missed the old woods road.

The ridge atop Fowler Mountain afforded an impressive view overlooking the Ulbrich Reservoir with farm land beyond. Sleeping Giant State Park and New Haven could be seen in the distance. Originally from the Durham area, George recalled stories about the farms and locals from "Cow Town," as Durham was known by way back when. Following the ridge, we descended steeply to Howd Road in Paug Gap. Then a climb up Pistapaug Mountain to our lunch spot at the bluff overlooking Pistapaug Pond. One

last descent, a long gradual one, brought us near to a sportsman's club where some members were target shooting. After crossing a deep brook we found ourselves at our end on Rt. 17. We were all relieved, for our feet had tired of the long walk on the rocky trail.

Hikers: Mark Schofield, Don Hagstrom, George Jackson

Leader: Sarah O'Hare

Holyoke Community College Trail System Hike April 22, 2014

Finally Spring has Sprung and the trails are free of snow and ice. On this bright sunny morning Mr Capp (Bill) arrived at the trailhead with time to spare and meditate the trail. No sooner than the rear hatch was opened, the Jackson Silverado pulled in with hitch hikers Sarah and Don. Forget the meditation.

Holyoke Community College is set against a ridge parallel to another that is traversed by the Metacomet-Monadnock Trail. Two trailheads allow access to a large tract of interesting ridges, cliffs and vistas. A daffodil profusion adorned our trailhead.

As usual a Mr Capp hike must and did start with a rock paved path up the first of a number of slopes. The yellow trail blazes meander along a ridge, thru wetlands and over small streams where skunk cabbage abounded. A climb to another ridge with switchbacks and the blazes turn white as we are on the M&M trail. Wild Geranium and the rare Trailing Arbutus (MASS State Flower) interrupted the vistas of Westfield to the west. The blazes lead steeply down a basalt slope that levels out on a sandy lane which once served as the Holyoke-Westfield streetcar route. An entertaining discussion ensued here about the differences between black, white and red oaks which all where in abundance. A moderate step climb up to another ridge presents excellent vistas in all directions. Another short uphill climb and it's time to take in the views and refreshments. The local raven is not happy with our rest stop positioning.

The trail is dangerously close to the ridge edge but turns inward thru cedars, hemlocks and white pines. Trillium leaves are peaking out of the forest floor. An old beacon tower straddles the trail before a glacial erratic is encountered. The last section of open ridges presents a view of Mt Tom and it's many antennas to the north. Shots being fired at the local rifle range are disturbing but not dangerous. The trail descends very steeply lined with Round Lobed Hepatica to a gravel road leading to the rifle range. Yellow Coltsfoot greets us at the foot of a slight uphill along an abandoned road. At the top we leave the M&M to rejoin the yellow blazes. The trail meanders along a brook and thru a small scenic glen with blooming bloodroot. A right turn again has a slight climb to the back of the Police station at the College. It's a short walk back to the trailhead.

Hike Leader: Bill Falconer
Happy Hikers: Sarah O'Hare, George Jackson,
Don Hagstrom,

Trout Brook Valley Sunday, May 18, 2014

Carol, Richard, Natasha, Fred, Celia and Flower met in the early morning at the Trout Brook Valley Conservation Area on the border between Easton and Weston in Fairfield County. It was a sterling morning when our intrepid team struck out to explore this rare bit of open space in Southeast Connecticut. As the German Shepard Flower happily sniffed her way along the path, the five humans followed her lead enjoying the scenic woods of Trout Brook. We began our journey on the "red trail" which is listed as "hard" on the map. It runs from north to south along the length of the preserve. The path was quite manageable with just a bit of a steep downhill. Thanks to the rope railings, we easily climbed down the steeper sections and continued enjoying the beautiful morning. On the way, Carol spotted the first lady slippers of the season.

After a quiet lunch at the southern entrance to the preserve, we turned to head back up the white trail. The white trail is marked "Easy" until you

get to the end, where it is marked "Medium." After the adventures of the red trail, we decided that an Easy/Medium path was a well-deserved relief. On the way, Carol spotted a lovely blue robin's egg that had fallen from the nest. 7.3 miles after our start, the group returned to the Northern entrance having shared a lovely day in the Spring woods.

Due to its location and beautiful preservation, Trout Brook and its neighbor Devil's Den are affectionately known as the "lungs of Fairfield County." Trout Brook is a 1009 acre preserve owned and managed by the Aspetuck Land Trust (ALT). The woods of Trout Book were initially designated to be converted into a housing development in 1999, but ALT saved Trout Brook and preserved it for future naturalists to enjoy and cherish. ALT manages the preserve not only for hikes, but also for berry pickers. Trout Brook includes 1000 blueberry bushes from which hikers can harvest up to two quarts in season. As the weather continues to warm, I encourage other hikers and families to explore Trout Brook, which is truly a gem within Fairfield County.

Leader. Celia Campbell-Mohn,
Hikers, Richard & Natasha Chandler, Fred Mohn
& Flower, Carol A. Langley

Gay City State Park April 6, 2014

A nice early Spring day greeted us for this hike around the loop trails at Gay City in Hebron. As with many of Connecticut's beautiful parks, forests and preserves, Gay City seems to take on a unique appearance and feel in each different season. I do some winter hiking there but Spring brings a different perspective, with hints of green replacing the grays and whites of winter. Fortunately the trails were considerably drier for our hike than they had been the previous weekend when I had scouted out routes in a steady rain, although we did still encountered a few wet spots.

Heading north from the parking area on the Red trail we passed an area of recent beaver activity with a number of freshly downed trees along the marshy areas. No live beaver sightings, though. Molson became tired of walking with me, so Tanya and Natasha stepped in to take his reins – okay it's just a leash and harness but sometimes he pulls like a horse – for several long stretches. After looping to the southernmost part of the park trail system, we cut north on the yellow trail, past another beaver dam and large water area. Peter and Cathryn stopped to do some birding before we continued to the Blackledge River and the old mill ruins. Short stops there as Richard read about the history of the Gay City community from its founding around 1800 to its ultimate demise in the late 19th century, then up to the beach where Molson took a wade in the pond, and over to the youth group camping area where my Scout troop holds an annual January campout. I regaled (bored?) the group with stories about digging down through the snow to find the picnic tables during one particularly snowy winter a few years back.

On the walk back along the paved park road we stopped to investigate the small cemetery that includes the graves of a few settlers and young children of long-gone Gay City settlement.

Leader: Jim Robertson
Hikers: Richard, Natasha and Tanya Chandler, Cathryn Dolan, Peter Gottschalk, Molson

**Bird and Flower Walk at the White
Foundation
April 20, 2014**

Normally I lead bird and flower walks around the middle of May but this year my trip schedule conflicted for this time so April 20th was the latest date I could lead this hike. The day was sunny but still on the cool side. Owing to our colder than normal spring this year and the higher elevation at White's Woods in Litchfield we saw no wildflowers nor even any leaves poking out. At lower elevations a day or two earlier I had seen

Dutchman's Breeches and Colt's Foot so I knew they'd be blooming at White's Woods in the not too distant future.

From the observation deck on the shore of Bantam Lake we were delighted to see several warblers along with some common resident birds. None of the birds was singing, perhaps it was too early in the season or the day was too cool. Our list of birds sighted included: Yellow Rump Warbler, Palm Warbler, Blue Grey Gnatcatcher, Ruby Crowned Kinglet, Tree Swallow, Bufflehead, Great Blue Heron, Bluebird, Brown Creeper, Red Winged Blackbird, Red Bellied Woodpecker, Nuthatch, Cardinal.

Hikers: Carol Langley, Pat LeBeau, Karen Foss.
Leader: Dave Wells

**Brimfield State Forest Trails
May 13, 2014**

With only one reply, just two homemade cookies were stashed in the pack. Mr Capp arrived early to check out a new trailhead in the tornado zone of 2011. As Gomer Pyle would have exclaimed, "SURPRISE, SURPRISE, SURPRISE!!". Sarah's Subaru rounded the parking lot entrance with a full complement of hitch hikers, namely Don, George and newcomer Gary. With intros and the sign in sheet filled in it was time to start our climb of MT Wadaquadick on the Summit Trail. The devastation by the tornado topping this mountain was scary but afforded a view of the carnage thru the valley in all directions. This was Mother Nature at her furious. The famous Brimfield Antique Flea Market was visible to the East and had George salivating to attend. Our first wildlife, a toad, was spotted by keen eyed Sarah as we descended to the south on abandoned Robinson road. As we left the Tornado zone it was evident that Nature was rebuilding rapidly with new vegetation, sprouting young trees and flowering dogwood. Cobbled and abandoned Stage Road once led from Brimfield to Wales MA on the CT border was a steady uphill. Skunk Cabbage and

vernal pools with new frog egg sacks bordered the road.

A side trail was a convenient spot for a break and turned into a discussion on the merits or not of marriages. This trail was later identified as the MBO RD leading back to the Tornado Zone. A quick assessment of this unmarked trail and a decision was made to return to the Stage Road where a patch of bluets caught our attention. A Scarlet Tanager flew brilliantly across our path and posed for photos in a nearby shrub. A short side trail brought us to a gate on Dearth Hill Road leading to Woodman Pond. Fiddle head ferns covered the forest floor but were a few days late to be picked. Don surprised a ribbon snake sunning by the way. Another photo op. Fresh beaver activity at the pond, an elusive oriole and another tanager were next on the way.

So many unmarked trails and gates. Turning northward by instinct, and crossing an unnamed creek on Hill Road, we nearly stepped on a Garter snake. Hunting is allowed year round in this forest. The trail leads to Dearth Hill Pond near the Ranger Station. Time for lunch as the rangers grilled their deer burgers. Surrounded by bird houses and feeders that attract Hummingbirds, swallows warblers and more our lunch was memorable. Back into the tornado zone, a long downhill on Hemlock Glen Trail leads to Dean Pond Road. The trail here has yet to be cleared and a real road walk was necessary. From times past, Mr Capp remembered a hidden gate leading to another uphill trail on Gleason Road ending as predicted at the back of the Ranger Station. This park has 21 miles of trails. We only covered 7 1/2 which was very rewarding considering the terrain, conditions and multitude of flora, fauna and wildlife. Back to reality.

Happily but sadly, Mr Capp savored those homemade cookies while soothing tired feet in a nearby stream.

Hike Leader: Bill Falconer

Happy Hikers: Sarah O'Hare, George Jackson, Don Hagstrom, Gary Griffin

Flower Full Moon Sleeping Giant May 14, 2014

The day was sunny then turned cloudy as we met for the full moon hike. The temps were in the 60's but as soon as we started to climb the Cascade Trail we warmed up fast. We reached the Quinnipiac Trail which led us to the tower.

The group of hikers dined on a variation of cuisine from yogurt, carrot sticks to the heavy duty meal of Lasagna. Time past as we waited in vain for the Full Moon to appear. We climbed to the highest viewing but all we saw was grey fog and felt a mist on our faces. This was the first time I have not seen a moon usually there is a hazy image even in clouds.

Rain jackets on, we started our descent down the tower path trail and joined the Red Diamond Trail which led us past the quarry to the old woods road which led to our cars.

A stop at Wentworth's to indulge on Ice Cream was a real treat since our new member paid for us all. A BIG THANK YOU to Gary Griffin.

L. Carol A. Langley

Hikers: Mandy Brink, Patty Adams, Don Hagstrom, Gary Griffin

FOR SALE

Do you have old useable gear that you would like to sell? Limit 3 items. 6 line max. Send to cosmical14@ayhoo.com

GEAR TIPS

Would you like to share what works good for gear and what does not. Share your info: cosmical14@yahoo.com

JOIN THE CONNECTICUT SECTION OF THE GREEN MOUNTAIN CLUB

The Connecticut Section offers a wide range of outdoor activities all year around: Hiking, backpacking, canoeing, snowshoeing and work parties in VT to maintain our section of the Long Trail. Members will receive Trail Talk our section newsletter and The Long Trail News, a quarterly publication of the Green Mountain Club, published four times a year, and discounts on GMC items such as books and shirts, etc.

ANNUAL DUES	
Individual	\$45.00
Family	\$60.00
Senior/Student/ Limited Income	\$25.00
Lifetime Membership	\$1000

NAME: _____

ADDRESS: _____

PHONE: _____

E-MAIL: _____

Please make checks payable to the Green Mountain Club. Mail your payment with form to:
Green Mountain Club, 4711 Waterbury-Stowe Rd., Waterbury Center, VT. 05677



Carol A. Langley
67 Pondview Drive
Southington, CT 06489